

Breaking Down Infrastructure Silos Since 1962

Do you lack the time, expertise or resources to design, procure, stage or implement data center hardware or software?

By extending your team with skilled engineers who've been at it for decades, you can harness creative, multi-vendor solutions that drive your IT and business goals.

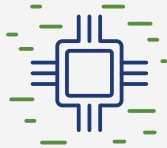
What's unique about ConRes Data Center Solutions:

- Multi-vendor solution design
- Staging and configuration
- Procurement and implementation
- Dedicated, proactive support

Our Core Solutions



Networking & Switching



Compute



Storage



Hyper Converged



Virtualization & Automation

DATA CENTER PARTNERS



HITACHI
Inspire the Next



Hewlett Packard
Enterprise

DELLEMC

VEEAM

Red Hat

rubrik

WHY CUSTOMERS TRUST US

- IT solutions provider focusing on five areas of IT infrastructure
- Women-Owned, private family business
- 55+ years of customer dedication
- Highly skilled engineers with top-level certifications
- Global presence, local service



Connect with us today to set up a comprehensive assessment of your current data center environment.

conres.com/datacenter | solutions@conres.com | (888) 643-0010

ConRes
IT SOLUTIONS

Integration & Logistics Center

Support and Service That Runs Full Circle

Our ISO 9001:2015 registered Integration & Logistics Center offers:

INVENTORY & ASSET MANAGEMENT

- Equipment warehousing and staging in a secure, climate-controlled facility
- Documenting and tracking inventory levels, work in progress (WIP) and finished goods
- Asset tagging, labeling, tracking and barcoding
- Issue birth and death certificates
- Asset decommissioning and data destruction



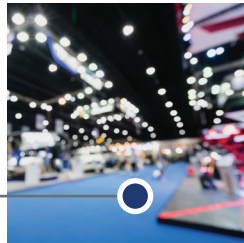
STAGING & INTEGRATION

- Rack and stack hardware assembly
- Network connections and hardware configuration
- Software installation and setup
- Configuration and asset documentation
- Remote ability to QA and validate configuration
- Burn-in testing
- Automated builds



MULTI-VENDOR MANAGEMENT

- Project management
- Offload administrative tasks so your team can focus on critical tasks
- Coordination with multi-vendor solutions to manage complex global supply chains



GLOBAL SHIPPING

- Global presence
- In-country shipments
- Phased rollouts
- Multi-vendor coordination



"We provide services for our customers that range from the simplest image loads to complete configuration, integration, labeling, shipping, tracking and inventory control. Our consistency sets us apart. Once the customer's exact specifications are met, we deliver to those specifications every time."

John Perkins, Director of Traffic/Warehouse